

XP SysPad

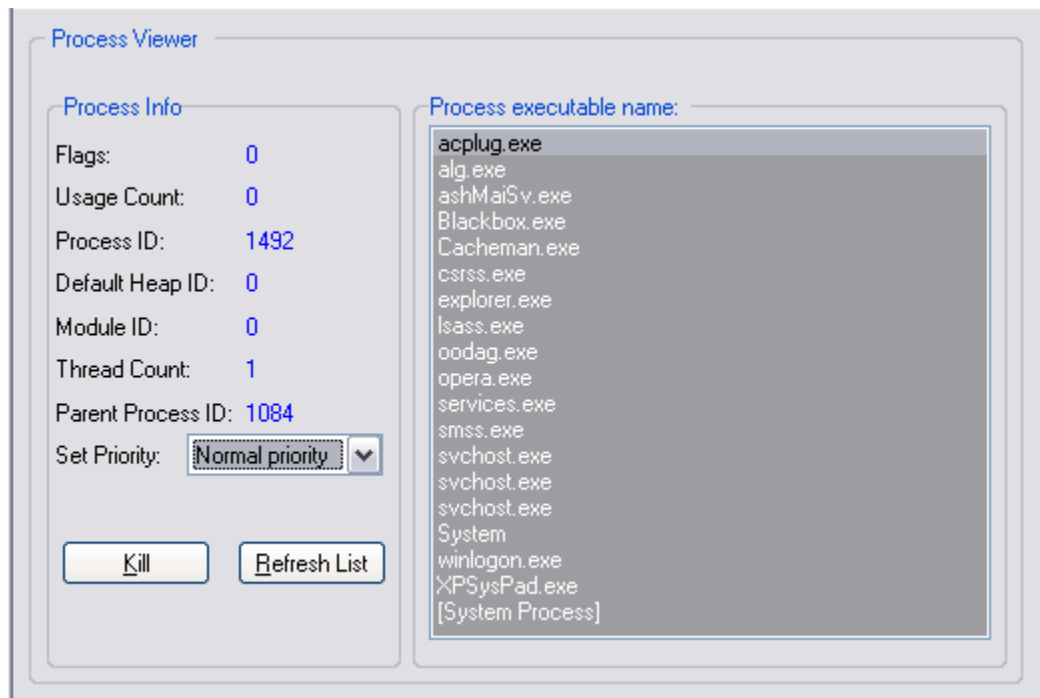
XP SysPad - Makes WindowsXP System Utilities One Click Away!



XP SysPad provides easy access to all of the prime Windows system info and utilities, such as the individual control panel applets.

About

XP SysPad is a launcher which makes access to Windows system utilities its specialty. All of the prime Windows system info and utilities such as the individual control panel applets, can be launched with the click of one button, which makes it easier than hunting around the explorer pane or waiting for menus to fold out. For convenience, it also can minimize itself to the system tray. It launches over 145 functions in all! The program is very small with a minute memory footprint, and makes no changes to your system registry whatsoever and comes with uninstaller. So, if for any reason you are unhappy with this program, just run the uninstaller. Hope you find it useful!



System Requirements

Windows 2000+

64 MB RAM

386 +

Mouse

Application: <500 Kb space

Standard Features

Get Access To:

- Accessibility Options
- Add/Remove Programs
- Briefcase Wizard
- Browse Directories
- Browse Network
- Calculator
- Calendar
- Captures Screenshot
- Character Map
- Chkdsk
- Clipboard Viewer
- Command Shell
- Computer Management Panel
- Control CD Drive (open/close)
- Control Desktop Icons
- Control Panel
- Control SQL client configuration
- CPU Information
- Create Shortcuts
- Date/Time Settings
- Device Manager
- Direct X Diagnostics
- Disk Defragmenter
- Display Properties
- Driver Verifier
- Email Default Client
- Empty IE Cache
- EmptyRecycle Bin
- Files and Settings Transfer Wizard
- Find Files + Folders
- Floppy Drive - Format or Copy
- Game Controllers
- Get Ip Number
- Hardware wizard
- Hide Taskbar
- Hotmail
- Indexing Service
- Internet Explorer
- Internet Properties
- Java Plug-In Control Panel
- Kill All Open IE Windows (ie. run away pop ups)
- Launch Signature Verifier
- Launch System Config
- Launch System Restore
- List Installed Drivers
- List Installed Programs
- Log Off /Restart
- Media Player
- Microsoft Management Console
- Mouse Settings
- Movie Maker
- Multimedia Settings
- Narrator
- Network Connections
- Network Neighborhood

Notepad
Object Packager
On Screen Keyboard
Open Desktop Folder
Open My Documents Folder
Open ODBC Settings
Open Program Files Folder
Open Recycle Bin Folder
Open Telnet
Open Windows Folder
Open Windows System Folder
Organize Explorer Favorites
Outlook Express
Performance Monitor
Power Configuration
Printers
Process Viewer - view and kill any running process!
Query Search Engines
Regedit
Regional/Language Settings
Removable Storage Manager
RollUp Form With Right-Click of Caption
Run Netstat
Run Program
Screen Magnifier
Shared Folder Wizard
Shared Folder Wizard
Show/Hide Taskbar
Sound and Audio Device Properties
Stays On Top
Synchronize Folders
System Memory Stats
System Properties
Task Manager
Telephone Settings
Temp file sweeper
User Accounts
Virtual Folders
WAB - Windows Address Book
Windows Disk Management
Windows Event Viewer
Windows Explorer
Windows Help
Windows Services Panel
Windows Sound panel
Windows Sound Recorder
Wordpad

FAQs

Q Make the application roll-up?

A Right-click the title [caption] bar.

Q How do I add my own shortcuts like in a user-defined shortcut menu?

A Just select "Programs" > "Create Shortcut". Then the next time you run the program, you will see your new shortcut, wherever you created it, for eg, "My Programs" > "Desktop"

Q How do I "zip" or "unzip" a ".zip" archive file?

A Go to "Programs" > "IE Express", this is an application that Windows has but for some reason has decided to make not very self-evident.

Q How do I kill a program that has frozen my screen, and wont respond?

A Go to "Programs" > "Task Manager" This program will kill any non-responsive application; just look under the "process" tab, and select the program.

Q How do I get control of applications that run at "boot-time"?

A Go to either "Directories" > "Startup Folder" or "System" > "Launch MSCONFIG" which will allow you to govern what does what at start time. This can especially be an annoyance with applications like MSN Messenger, ICQ, etc.

Q How do I kill excess pop-up windows?

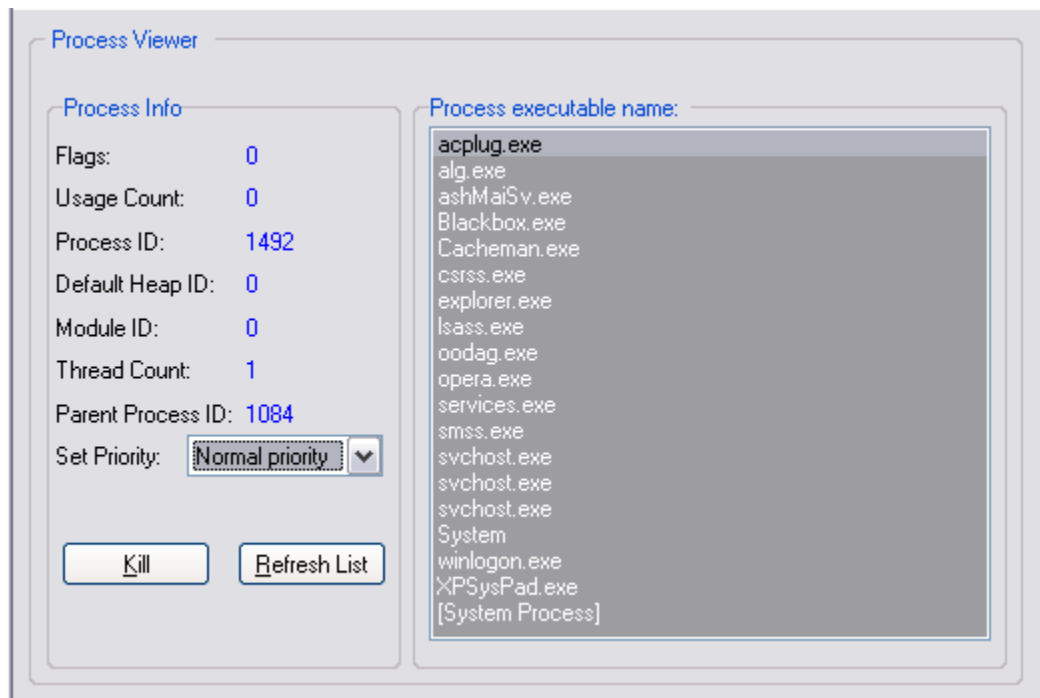
A Go to "Net" > "Kill IE Windows"

Q How do I see what's in my system's registry?

A Go to "System" > "Regedit" But... be very careful in there, and make sure that the registry is backed-up.

Q How to "Kill a Process"?

A Just select the process in the Process Viewer and hit the "Kill" button



Limitations

Slow program startup time: this is because on initial startup, XP Syspad is indexing all of the running processes, indexing all of the virtual folders and their contents and icons. Therefore it is like starting your file manager with all of its folder tree views expanded, and also starting up the Task Manager (CTRL+ALT+DEL) at the same time.

Lack Of Customizability Like "Other" Launchers:

This is because XP Syspad is primarily designed to give access to components already in the Windows 2000/XP operating system, rather than act as a replacement for the system tray, "Start" or "Run" menus.

License

Please Read The Following Terms & Conditions.

You Agree That All Of The Terms And Conditions Below Apply To You And Anyone Else Who Uses This Software, If Either: You Click The "Accept" Button, Or if You Copy, Install, Or Use This Copy Of Software, or If You Do Not Agree, Please Terminate Installation Immediately, And Do Not Use This Software.

In no event shall XTORT, A.K.A. KENNY HEIMBUCH ©, or anyone else who has been involved in the creation, production, or delivery of the SOFTWARE be liable for any special, incidental, indirect, or consequential damages whatsoever (including, without limitation, damages for loss of business profits, business interruption, loss of business information, or any other pecuniary loss) arising out of the use of or inability to use the SOFTWARE, even if XTORT, A.K.A. KENNY HEIMBUCH ©, has been advised of the possibility of such damages.

The SOFTWARE is provided "as is" and without warranty of any kind, either express or implied, including, without limitation, the implied warranties of fitness for a particular purpose. The entire risk arising out of the use of or inability to use the SOFTWARE remains with the user. By installing and using the SOFTWARE you are agreeing to the above terms. Windows, WindowsXP, Xp, are all registered trademarks of Microsoft. All trademarks mentioned, depicted, or referred to in this program are the property of their respective owners.

Donate

Donate

Thank you for choosing another freeware
Application from xtort.net!

Any sort of donation would be greatly
Appreciated, but not necessary.
If you are happy with this program,
Please continue using it!

Consider visiting:
<http://www.xtort.net/donate.php>

Enjoy!!!!

Thanks

Extra Thanks to:

Priyatna Harun: for the TFileMenu component!

Borland for Delphi

JEDI for the JEDI VCL for Delphi Library!

Wayne De Rick

Brian McNeely

Bob Prosperi

And You!

